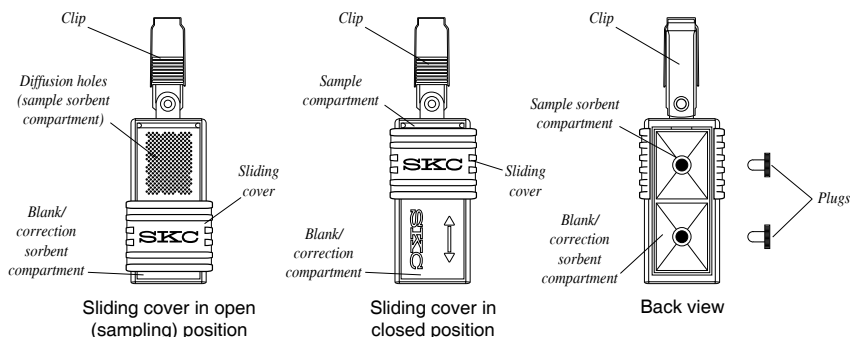




# Operating Instructions

863 Valley View Road, Eighty Four, PA 15330  
724-941-9701 • skcinc.com

## User-filled ULTRA Passive Sampler Cat. No. 690-200



## Applications

SKC patented\* user-filled ULTRA® Passive Sampler provides for low ppb to ppt detection of organic vapors in ambient and indoor air. Filling the sampler is simple and provides a wide variety of sorbent options and a longer shelf-life.

\* U.S. Patent No. 6,607,581

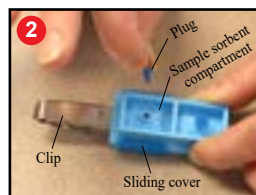
## Performance Profile

<b>Sampling Rates</b>	Go to the SKC Passive Sampling Guide at <a href="http://www.skcinc.com">www.skcinc.com</a>
<b>Analysis</b>	Thermal desorption; gas chromatography. See <i>Analysis Instructions 40125</i> in the Knowledge Center at <a href="http://www.skcinc.com">www.skcinc.com</a> .
<b>Shelf-life</b>	<b>Limited; check expiration date on packaging.</b> Store at $\leq 39.2$ F (4 C). See specific Storage conditions below.
<b>Storage</b>	Store at $\leq 39.2$ F (4 C) in a clean, organic solvent-free environment.  <i>Before sampling:</i> <ul style="list-style-type: none"><li>• Vials of Tenax TA, Chromosorb 106, Carboxpack X, or Anasorb® GCB1: Up to 60 days</li><li>• Vials of Anasorb CSC: Up to 1 year</li></ul> <i>After sampling:</i> 21 days <b>Caution:</b> Do not store with food.

**skcinc.com**

## Filling the Sampler

1. Remove sampler from the resealable pouch.
2. With the back of the sampler facing upward and the metal clip oriented to the left, remove the plug from the sample sorbent compartment (on left side, immediately above diffusion holes).



3. Align the funnel (Cat. No. 690-301) over the compartment access port on the sampler and press down firmly.

**! Ensure funnel is securely installed on the access port.**

**! If funnel does not sit properly, the sorbent will not fill the sampler.**

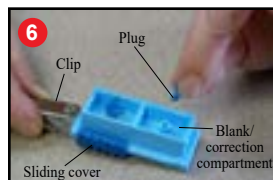
4. Open one vial of selected sorbent.
  - a. Slowly pour small amounts of the sorbent into the funnel. *Note: If sorbent starts to back up into the funnel, lift funnel and housing as one unit and gently tap against a hard surface until funnel clears.*



**! Do not lift funnel until sorbent is completely transferred into housing.**



- b. Repeat until all sorbent has been transferred from the vial into the housing compartment.
5. Once all sorbent has been transferred from the vial, remove the funnel, and replace the plug on the compartment access port.
  6. If a blank/correction is required, remove the plug from the blank/correction compartment (on right side, immediately above SKC cover).
  7. Repeat Step 3.
  8. Open second vial and repeat Steps 4a. and b.
  9. Once the sampler has been filled, remove funnel, and replace plug on compartment access port.



# Sampling

1. Clip sampler(s) in appropriate location.
  - a. **Indoors:** Clip sampler(s) to stand accessory (Cat. No. 690-302) and locate at appropriate height.
  - b. **Outdoors:** Clip sampler(s) inside shelter (open on two ends and bottom to allow air to flow freely). Hang shelter securely at the appropriate height.

❗ **Ensure diffusion holes in sampler are not obstructed in any way.**

2. Start sampling: Slide sampler cover to open position (diffusion holes visible). Write sample start time on pouch label.

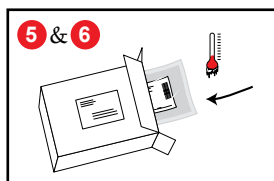
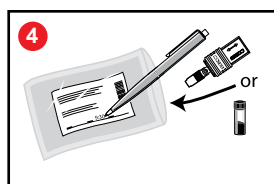
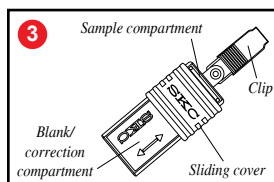
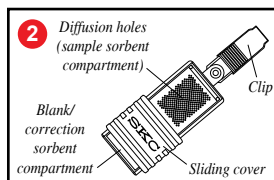
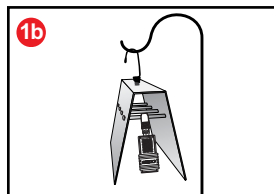
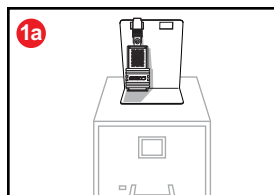
3. Stop sampling: Slide sampler cover to closed position (arrow and SKC visible). Write sample stop time on pouch label.

**Important:** Measure and record ambient temperature and atmospheric pressure. Include in information sent to the laboratory.

4.
  - a. Place sampler in its resealable pouch **immediately** after sampling.
  - Or
  - b. Remove plug from sample sorbent compartment. Remove lid from sorbent vial and place opening of sorbent vial over the compartment access port. Transfer sorbent to vial by tipping the sampler upside down while holding the vial in place securely beneath the sampler. Gently tap the sampler to remove any remaining sorbent. Replace lid on sorbent vial and place vial in resealable pouch. Repeat for blank/correction sorbent.

❗ **Ensure sample ID on sampler or vial matches sample ID on pouch.**

5. Seal pouch(es). Place pouch(es) in container with cool pack.
6. Use expedited shipping to send sample(s), pertinent information, and Chain of Custody form(s) to a laboratory for analysis.



*For further information on analysis, see Analysis Instructions 40125.*

## Ordering

User-filled ULTRA Passive Sampler	Cat. No.
<b>Empty Housing</b> , packaged in reusable pouch, ea, <i>requires sorbent vials listed below; select sorbent appropriate for the application</i>	<b>690-200</b>

### Sorbent Vials, # pk/2

Contain purged sorbent (< 25 ng typical background levels)

<b>Anasorb GCB1</b> , <sup>‡</sup> 370 mg	<b>690-201</b>
<b>Chromosorb 106</b> , <sup>‡</sup> 285 mg	<b>690-203</b>
<b>Tenax TA</b> , 253 mg	<b>690-204</b>
<b>Anasorb CSC</b> , <sup>Ω</sup> 500 mg, for solvent extraction	<b>690-205</b>
<b>Carbopack X</b> , 400 mg	<b>690-206</b>

### Sampling Accessories

<b>Transfer Funnel</b> , for ULTRA only	<b>690-301</b>
<b>Stand for Indoor Sampling</b>	<b>690-302</b>
<b>Shelter for Outdoor Sampling</b>	<b>690-303</b>

### Analysis Accessory

<b>Thermal Desorption Tube, Perkin Elmer</b> , 0.25-inch OD x 3.5-inch length, includes screens and end caps	<b>P226530</b>
--	----------------

# Limited-shelf life; see Storage specifications in Performance Profile.

‡ Comparable to Carbopack B

¥ For additional information on sampling rates, go to the Knowledge Center at [www.skinc.com](http://www.skinc.com) and search on 690-203.

Ω Can be stored for up to 1 year at ≤ 39.2 F (4 C)

## SKC Limited Warranty and Return Policy

SKC products are subject to the SKC Limited Warranty and Return Policy, which provides SKC's sole liability and the buyer's exclusive remedy. To view the complete SKC Limited Warranty and Return Policy, go to [skinc.com/warranty](http://skinc.com/warranty).